

800 / 1100 / 1450

TECHNOFOLD

FOLDER-GLUERS



www.dgm-global.com

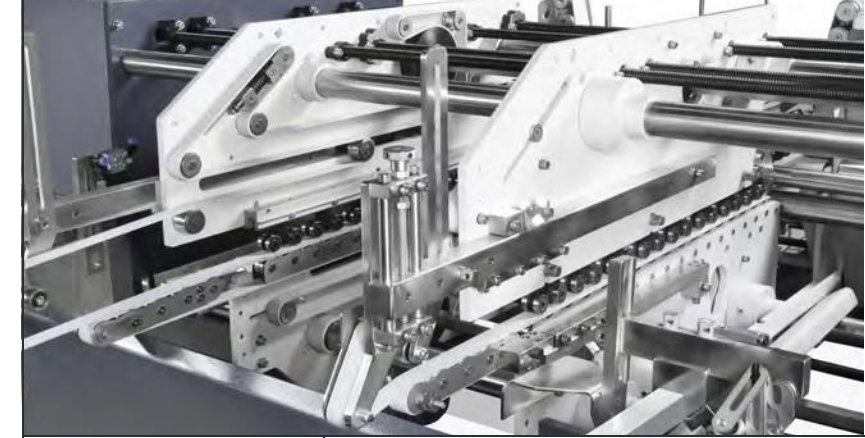
ADGM CARTON
CONVERTING
EQUIPMENT

TECHNOFOLD Folder-gluer

800 / 1100 / 1450

HIGH SPEED AUTOMATIC FOLDER GLUER

TECHNOFOLD Ideal for working with medium and large boxes in the heavy packaging industry. Its design includes driven upper carriers, making easy the precise folding and closing micro-flute and corrugated boxes in its advance. The new Technofold series inherits the best features of the previous Technofold ES series, making a qualitative leap by developing new solutions. Versatility, fast exchange of accessories, easy setup together with faster production speed, guarantee a high productivity and quality of work. Technofold, the perfect folder-gluer machine for the most demanding packaging market.



MODELS

TECHNOFOLD 800 / 1100 / 1450 AC
Without pre-folding section.
Suitable for straight-line, crash-lock bottom & double wall boxes.

TECHNOFOLD 800 / 1100 / 1450 PC
Suitable for straight-line, crash-lock bottom & double wall boxes.

TECHNOFOLD 800 / 1100 / 1450 SL
Suitable for straight-line, crash-lock bottom, double wall, 4 & 6-corner boxes.

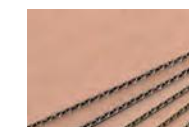
MATERIALS



Plastic

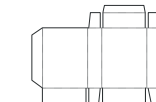


Carton board

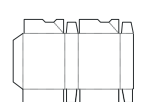


Corrugated board

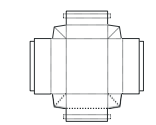
BOXES



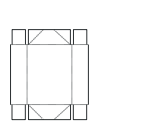
Straight line



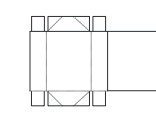
Lock - bottom box



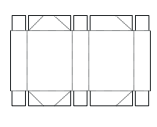
Double - wall Box



4 corner Box



4 corner Box with Lid



6 - corner box



COMPONENTS FOR ALL MODELS



1

Feeder section

- Independent and motorized friction feeder with variable speed.
- Adjustable electronic pile vibrator.
- Lateral feed gates fully adjustable to the width of the blank.
- 6/8/10 feeder belts.
- Two adjustable front feed knives.



2

Side register section

- Independent section with an unparallel lower carrier that guides the box to a parallel handrail that allows a perfect blank alignment.



3

Pre-folding section

- Left hand glue flap pre-folder up to 180°.
- Third crease line pre-folder up to 135°.
- 1st and 3rd crease openers.



4

Crash lock bottom section

- Complete set of folding hooks and helices to fold the front flaps of the blank smooth and accurately.
- Set of accessories for "B" lock bottom.



5

Lower gluing unit

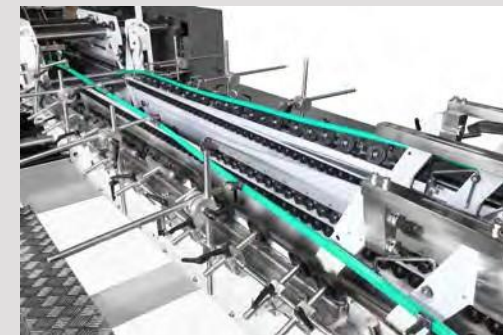
- Left lower gluing tank.
- Easy to remove and clean.



6

Upper gluing unit

- Double upper gluing system by disc.
- Easy to remove and clean.



7

Folding and Closing section

- Smooth and accurate folding of 2nd and 4th creases.
- Outer folding belts adjustable up to 180° with variable speed.
- Three upper and lower carriers.
- 25 mm lower and 30 mm outer belts on left and right carriers.
- Width-wise adjustable heavy duty compression rollers.



8

Trombone section

- Upper and lower drive mechanism for length adjustment.
- Equipped with automatic belt tension-adjusting system.
- Continuous and automatic box collection mechanism that ensures a neat transfer to the Press section, guaranteeing a well aligned flow.
- Electronic counter and "Kicker" for marking packets.



9

Press section (Delivery section)

- Independent & motorized press section.
- Manual and Automatic mode (follow up).
- Upper section moves back and forward, allowing for different box length.
- Technofold 800/1100: 5.5 m total length with 3.1 m effective pressure length. Technofold 1450: 7.35 m total length with 4.2 m effective pressure length.
- Pneumatic pressure adjustment



10

Back folding device

- Suitable to fold rear 4 & 6-corner flaps or panels and many other designs.
- Motorized and untimed electronic back folding system with intelligent servo motor technology.
- Easy to setup through the main touch screen.

TECHNOFOLD

800 / 1100 / 1450



SPECIFICATIONS

TECHNOFOLD

800 **1100** **1450**

Processed materials

Carton board max.	800 gsm	800 gsm	800 gsm
Corrugated flute type	N, E, F & B	N, E, F & B	N, E & F

Capability

Speed max.	300 m/min	300 m/min	300 m/min
Inching speed	30 m/min	30 m/min	30 m/min
Thickness of folded box max.	12 mm	12 mm	12 mm
Blank width	800 mm	1100 mm	1450 mm

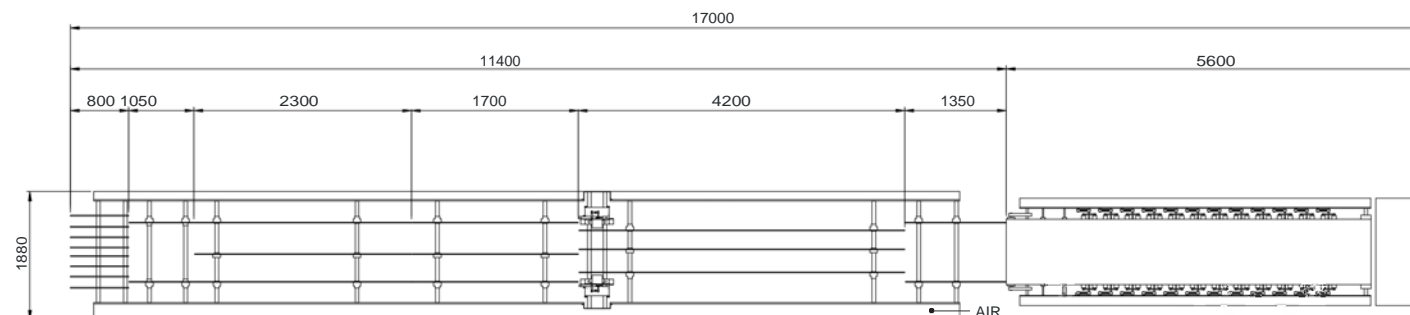
Dimensions & weight

	800			1100			1450		
	AC	PC	SL	AC	PC	SL	AC	PC	SL
Length	13.65 m	15.95 m	15.95 m	14.7m	17m	17m	15.6 m	17.9m	17.9 m
Width	1.58 m	1.58 m	1.58 m	1.88 m	1.88 m	1.88 m	2.23 m	2.23 m	2.23 m
Height	1.4 m	1.4 m	1.4 m	1.5 m	1.5 m	1.5 m	1.5 m	1.5 m	1.5 m
Net Weight	7 Ton	7.5 Ton	7.8 Ton	8 Ton	9 Ton	9.2 Ton	9 Ton	10Ton	10.2 Ton

Installation

Electrical connected load	16 kW	20 kW	26 kW	12 kW	20 kW	26 kW	16 kW	20kW	26 kW
Compressed air	6 bar	6 bar	6 bar	6 bar	6 bar	6 bar	6 bar	6 bar	6 bar
Air compressor capacity	10 m³/h	10 m³/h	10 m³/h	10 m³/h	10 m³/h	10 m³/h	10 m³/h	10 m³/h	10 m³/h
Air tank capacity	60 L	60 L	60 L	60 L	60 L	60 L	60 L	60 L	60 L

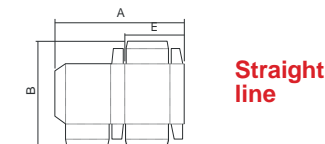
SCHEME TECHNOFOLD 1100



⚡ electrical POWER

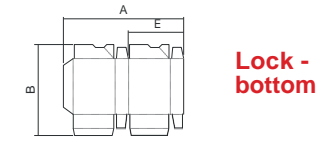
BOXES

800 **1100** **1450**



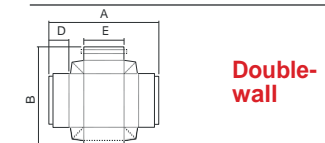
Straight line

A: 160 - 800 mm	A: 160 - 1100 mm	A: 420 - 1450 mm
B: 100 - 800 mm	B: 100 - 900 mm	B: 170 - 900 mm
E: 70 - 390 mm	E: 70 - 540 mm	E: 200 - 710 mm



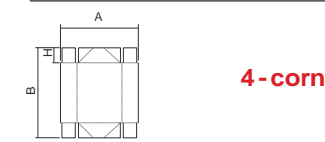
Lock-bottom

A: 170 - 800 mm	A: 170 - 1100 mm	A: 420 - 1450 mm
B: 170 - 800 mm	B: 170 - 900 mm	B: 170 - 900 mm
E: 80 - 390 mm	E: 80 - 540 mm	E: 200 - 710 mm



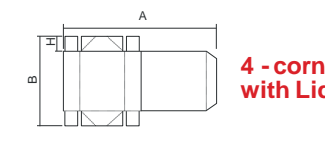
Double-wall

A: 200 - 800 mm	A: 200 - 1100 mm	A: 320 - 1450 mm
B: 100 - 800 mm	B: 100 - 800 mm	B: 100 - 800 mm
D: 30 - 150 mm	D: 30 - 150 mm	D: 30 - 150 mm
E: 80 - 620 mm	E: 80 - 950 mm	E: 200 - 1300 mm



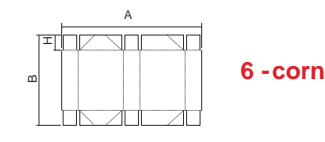
4-corner

A: 150 - 800 mm	A: 160 - 1100 mm	A: 280 - 1450 mm
B: 160 - 800 mm	B: 160 - 800 mm	B: 180 - 800 mm
H: 25 - 150 mm	H: 25 - 150 mm	H: 25 - 150 mm



4-corner with Lid

A: 270 - 700 mm	A: 330 - 1100 mm	A: 430 - 1450 mm
B: 160 - 450 mm	B: 160 - 450 mm	B: 180 - 800 mm
H: 25 - 150 mm	H: 25 - 150 mm	H: 25 - 150 mm



6-corner

A: 270 - 700 mm	A: 330 - 1100 mm	A: 430 - 1450 mm
B: 160 - 450 mm	B: 160 - 450 mm	B: 180 - 800 mm
H: 25 - 150 mm	H: 25 - 150 mm	H: 25 - 150 mm

www.dgm-global.com

info@dgm-global.com

TEL (86) 0752-277 37 80
FAX (86) 0752-277 37 78

HuiHuan Industrial Area, Huizhou City,
Guangdong Province, China

Huizhou De Gang Machinery Co., Ltd

 **DGM** CARTON
CONVERTING
EQUIPMENT

USA & Canada exclusive distributor:

 **PPCTS**
TECHNOLOGIES & SOLUTIONS